



# Friends of Taka Sumi-e

## May 2020 Newsletter

Dear Friends of Takasumi-e,

[www.takasumi-e.com](http://www.takasumi-e.com)

We hope everyone is safely isolating and taking care of yourselves, your family and your friends. This is a good time to do those things you don't usually have time for, and a good time to do some painting.

Our Senseis have worked hard to learn how to use Zoom and prepare and present lessons for us so we can continue painting. It is a learning process for all of us to understand the technology, but there is improvement in communication every week.

If you have not yet connected with your class on-line, please check out the Welcome page of our website, [www.takasumi-e.com](http://www.takasumi-e.com). for contact information for your Sensei. All classes meet at the usual times, just on Zoom instead of in person. Thank you, Ron, for updating our information.

Everyone is aware that there will not be a workshop this month. There are lots of musical and cultural events on-line and on TV. We also have our wonderful San Diego weather to enjoy and collect our Vitamin D and exercise.

Be Safe.  
Respectfully,

Your President, and Vice President,  
Alice & Stephanie

+++++

### ANNUAL SOCIETY GATHERING

The Society's annual gathering is still "up in the air". If we need to celebrate at a distance, how many of you are able to access and use Zoom? Please advise by email to [ralsgal@gmail.com](mailto:ralsgal@gmail.com).

+++++

## SHARE YOUR ART

During our hiatus, please send your sketches, paintings, and anything you may have found that are inspirational to me ([ralsgal@gmail.com](mailto:ralsgal@gmail.com)) as a .jpg and we'll post some of them in our next newsletter and on the website. It will be fun to share and to see what everyone is doing with their free time.

+++++

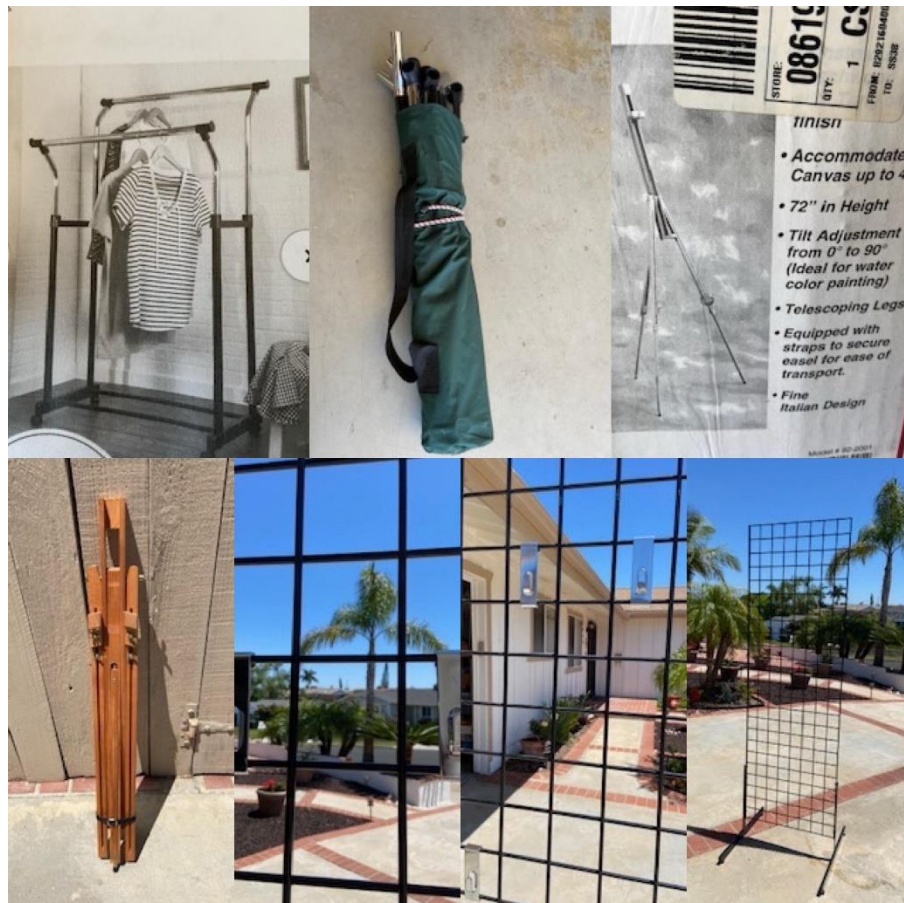
## 2020 WORKSHOP SCHEDULE

All workshops are currently on hold. Check the website ([www.takasumi-e.com](http://www.takasumi-e.com)) or the June newsletter for any updates.

+++++

### CLASSIFIEDS (for FOT artists only):

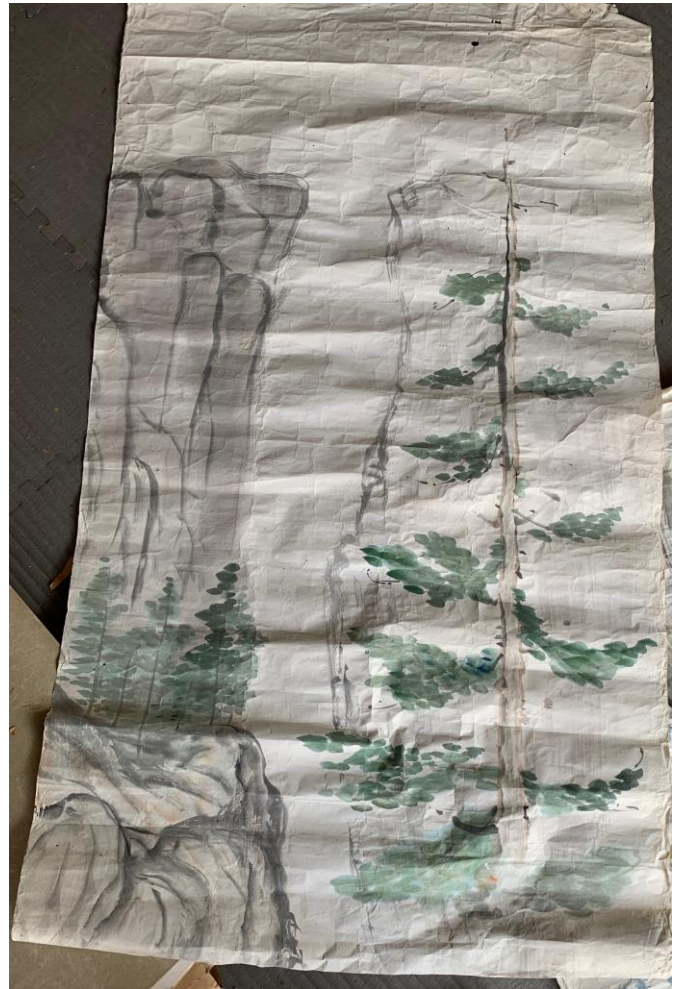
- ✚ Stella has two sturdy and easy to put together display racks, a free-standing easel, and a double garment rack that are free to anyone who might be interested. (We might want to consider these items for use at the Friends of Taka Sumi-e (FOT) shows, but they will need to be stored in someone's garage.) Contact Stella at [syting7@gmail.com](mailto:syting7@gmail.com) if you are interested or are able to store them for FOT.





## ART MATERIALS DONATION

Victor has gone through some of the paper he retrieved from Bettye Stillwell's paper and arts supply and discovered some of her artwork. I thought I would share it with you.







When you take a selection of paper that is rolled up (when we get together the next time), you may find a masterpiece by Bettye rolled up in it!

+++++

## A Couple of Internet Amusements for You

- + <http://www.sumiesociety.org> Check out their EXHIBITIONS section. If you click on the individual paintings, they open up big. The thumbnails are not indicative of the actual painting.
- + <https://artsandculture.google.com/partner?hl=en> 500 museums around the world are participating in virtual tours of their collections. You can stroll the halls of the museums and on the home page of each museum collection you can click on the thumbnail of the painting you like and you will see the history of the painting below the image. Almost all the famous museums are included. It's a great way to get some culture without having to leave your house.



DEZI THE DESERT TORTOISE HAS EMERGED FROM HIBERNATION ACCORDING TO CLIFF. HE'S WAITING FOR MAHUNGA TO WAKE UP!



ILEANE INTERPRETED THE FALLEN GIANT IN THIS MANNER – IT'S BEAUTIFUL!



LOUISE'S RABBIT STANDS IN FRONT OF THE FALLEN GIANT IN HER INTERPRETATION.



GAYE TRIED OUT A 2B PENCIL OUT OF THE KIDS' BOX ON A KIDDO DINOMITE SKETCH PAD, THEN ADDED CRAYOLA COLOR PENCILS.





LUANA'S RABBIT IS COMPLAINT WITH THE COVID-19 REGULATIONS CURRENTLY IN PLACE!



NAOKO PRESENTS US WITH A LOVELY FIREBIRD OR PHOENIX.



VICTOR HAS SPENT A GREAT DEAL OF TIME IN THE OUT-OF-DOORS AND HAS A BEAUTIFUL DESCRIPTION OF A FALLEN GIANT.



FAWN'S INTERPRETATION IS SOOOO FANCIFUL!



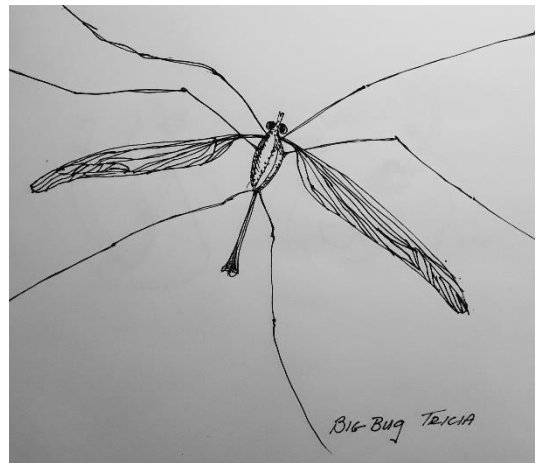
SYLVIA IS VERY CLEVER. WHERE IS THAT CRANE FLY?



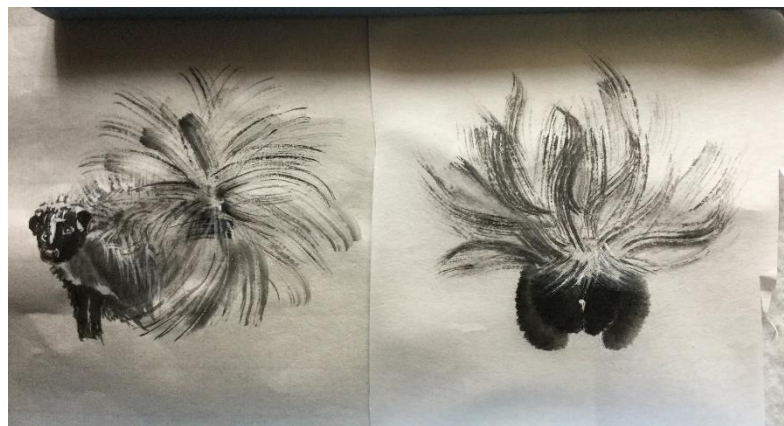
CLIFF, TOO, HAS SPENT TIME IN THE OUT-OF-DOORS!



STEPHANIE'S BEAUTIFUL LILY PADS ARE ACCENTED BY THE CRANE FLIES



TRICIA WENT WITH A STRAIGHT-FORWARD INTERPRETATION OF THE CRANE FLY



KEIKO HAS SHARED HER CHEERFUL LITTLE SKUNK WITH ALL OF US!