



Friends of Sumi-e

October, 2024

Volume 2 | No. 10

Hi Everyone,

Just a quick note to say how much FUN our Annual Gathering was and how delighted I was to see how we shared our love of all the Asian Arts with our guests from Lung Hsiang (Chinese brush painters) and the Asian art classes from the Community College. More than 40 folks were in attendance and rumor had it that everyone enjoyed themselves.

Paint On,
Gaye

ANNUAL GATHERING

Many, many thanks to Julie, Cindy, Sue, Sylvia and their team of worker bees who hosted all of Friends of Sumi-e and our invitees on September 14th. Julie's Talmadge garden was a beautiful background for a wonderful gathering of friends.

Photos by Chau, Friends of Sumi-e dedicated photographer!

OCTOBER WORKSHOP
Room 104, Casa del Prado, Balboa Park

Hokusai One Stroke
Friends of Sumi-e
Saturday, October 5, 2024
9:00 AM to 12:00 Noon
Cliff Brown
cliffbrownart@gmail.com

Homework:

Copy the Hokusai One Stroke (medium).PDF to your smart phone, so you can access the PDF book during the workshop. The PDF contains about 55 pages of one stroke drawings you can choose from. I have compressed the PDF file to 5.5 MB.

You can, also, access the PDF online using the link:

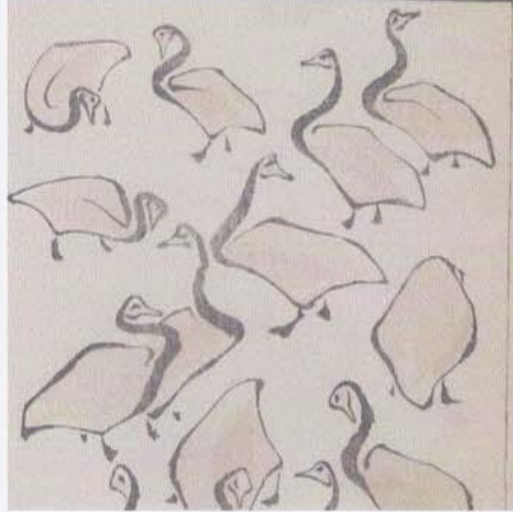
<https://www.hokusai-katsushika.org/pictures-drawn-in-one-stroke.html>

Materials:

Normal sumi-e painting brushes and supplies.

We will be doing a lot of quick sketches. So, this is a good workshop to use up your scraps of rice paper.

Bring some pink and blue pigments to make light washes.



C: Hokusai One Stroke (2024).odt

2024 MEMBERSHIP RENEWAL

REMINDER: NOW IS THE TIME! If you wish to have your masterpiece in the November show, your membership needs to be up to date. To renew your 2024 Membership, go to the website – www.friendsofsumi-e.com – and download the Membership Registration Form, follow the instructions, and mail it to our Treasurer, Cindy Morgan, with your \$20. The cutoff date to receive your membership renewal to participate in the Fall Exhibition will be November 10, 2024.



MISSING FRIENDS OF SUMI-E ANNUAL GATHERING MAH JHONGG TILES

We had a really fun mixer at our Annual Gathering and a few of us were SO excited that we took our tile home with us! It is IMPORTANT that they be returned to our hostess, Julie, because they belong to her neighbor's game set. Please go through your items and, if you have one in your treasures, please return it to her:

Julia Roth
4611 E. Talmadge Drive
San Diego, CA 92116
jhroth@aol.com



THESE ARE THE MISSING PIECES.

Upcoming Workshops & Society Events/Activities

October	10/5/2024	Cliff Brown	Hokusai One-Stroke Workshop
November	11/2/2024	Kathy McMillen	Festival of Trees Postcard Workshop
	11/23-24/2024		49 th Annual Exhibition
December	DARK	(December Nights in Balboa Park)	

OPEN STUDIO

Open Studio is still on hiatus.

NOVEMBER WORKSHOP

To get a head start on our Saturday, November 2, 2024, Friends of Sumi-e Workshop - "Festival of Trees" – Kathy McMillen shares her thoughts . . . You may want to put on your thinking caps and begin planning!

We have again been invited to participate in the San Diego Floral Society's "Festival of Trees" for December Nights in Balboa Park. The theme this year is Celebrating San Diego Holiday Traditions.

We will paint 4" x 6" postcards in the horizontal format. You may want to portray a personal highlight of your holiday season, or you may want to paint something that happens around San Diego such as the parade of boats or caroling in your neighborhood, or food, or the lion dance.

We hope as part of this workshop some of you will paint one of the iconic signs that signifies your neighborhood. San Diego is rich with these signs. The idea is to include as many neighborhoods and traditions to cover two wooden trees that Ron Lingley is creating for us.

Postcards will be provided. Please bring your favorite brush and ink/paints, and let's share our holiday traditions together.

Kathy

2024/2025 HAPPENINGS

- Tuesday Painters is on hiatus from September 24 through October 8. Take this time to sketch in your own garden, neighborhood or favorite location. When we return, we'll meet via ZOOM and share our artwork and plan our next outings. We generally meet on Tuesday every week, plein air either on-site at 10:00am(ish)-noon somewhere in the County, or a ZOOM session. ZOOM starts at 12:30 pm. Watch for weekly email notices.
- Monthly Workshop the first Saturday of the month from 9:00am to noon, Room 104.
- Washu Kai 49th Annual Art Exhibition – November 23-24, 2024
- December Nights [Festival of Trees] – December 6-8, 2024, in Balboa Park. The Festival of Trees is in Room 101, Casa del Prado. WATCH FOR MORE INFORMATION.
- Lung Hsiang – Our sister Chinese Brush Painting organization annual art exhibition – February 22-23, 2025
- Art Club – Our sister Japanese Brush Painting organization annual art exhibition – March 29-30, 2025
- TakaSumi-e Society 22nd Annual Art Exhibition – June 21-22, 2025
-

MORE PICTURES FROM THE ANNUAL GATHERING



FRIENDS FROM LUNG HSIANG, OUR SISTER
CHINESE BRUSH PAINTING SOCIETY.